



The Arizona collection is an elegant and graceful glazed porcelain consisting of 3 colours with multiple design options. The French Patterned modular is designed to be laid in the traditional French Pattern. Supplied in individual packs of 7 tiles in 4 different sizes, the pattern appears random, while the repetition is perfectly balanced, and pleasing to the eye. Completing the range is the rectified 7.5cmx23cm with rustic irregular edging and a 15cmx15cm.

# ARIZONA





# ARIZONA

## Glazed Porcelain

### COLOURS



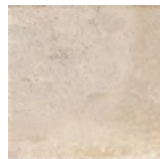
Arizona Sand



Arizona Cotto



### MATT SURFACE



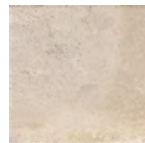
150x150mm



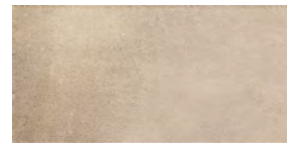
75x230mm irregular edge

### FRENCH PATTERN SIZES

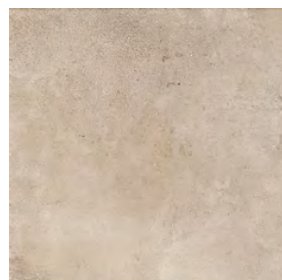
#### IN/OUT SURFACE



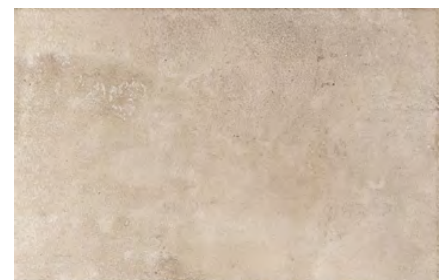
98x198mm



198x398mm



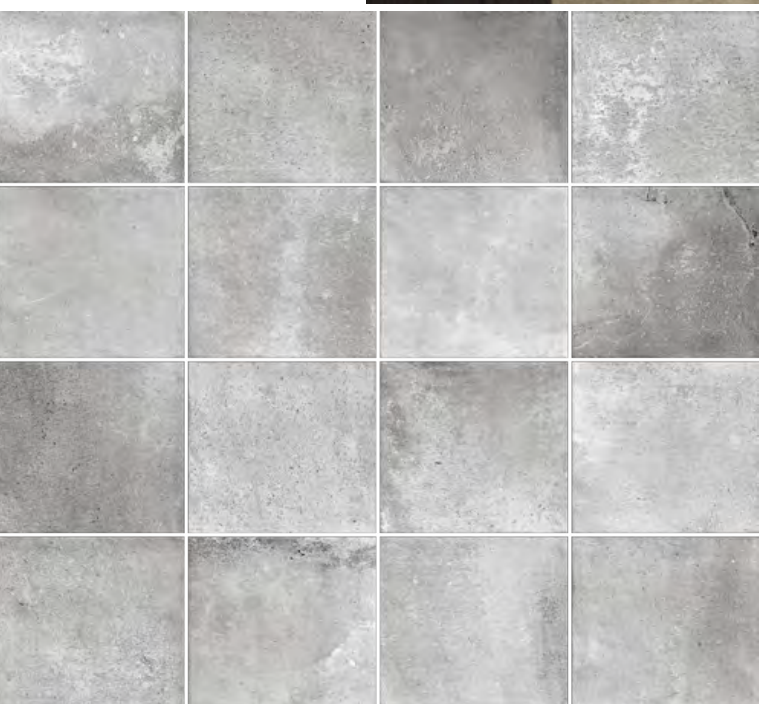
398x398x398mm



398x598mm



# ARIZONA



**ARIZONA STONE/15**  
150×150mm/6"×6" / 16FACES / MATT

**ARIZONA STONE/75**  
75×230mm/3"×9" / 24FACES / MATT

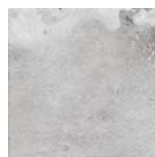


# ARIZONA STONE FRENCH PATTERN



## FRENCH PATTERN SIZES

### IN/OUT SURFACE



98x198mm



198x398mm



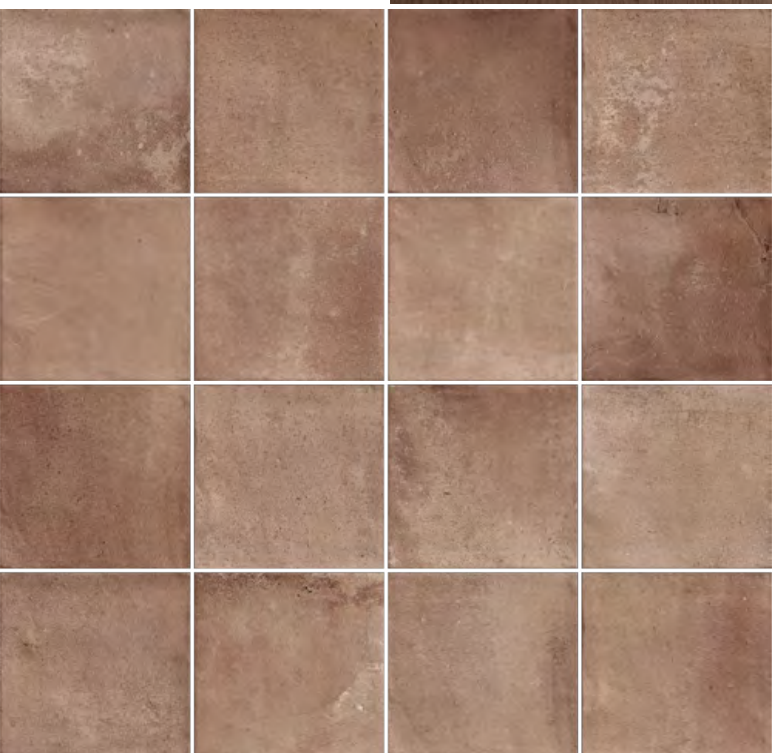
398x398mm



398x598mm



# ARIZONA COTTO



**ARIZONA COTTO/15**

150×150mm/6"×6" / 16FACES / MATT



**ARIZONA COTTO/75**

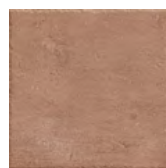
75×230mm/3"×9" / 24FACES / MATT



# ARIZONA COTTO FRENCH PATTERN

## FRENCH PATTERN SIZES

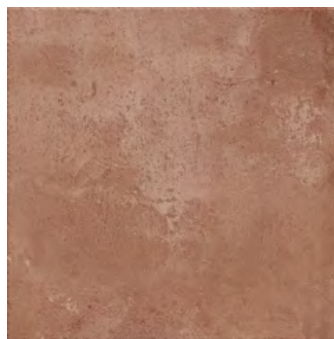
IN/OUT SURFACE



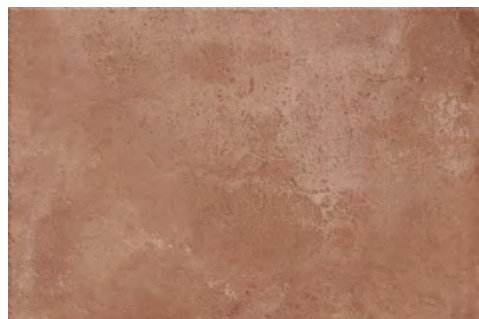
98x198mm



198x398mm



398x398mm



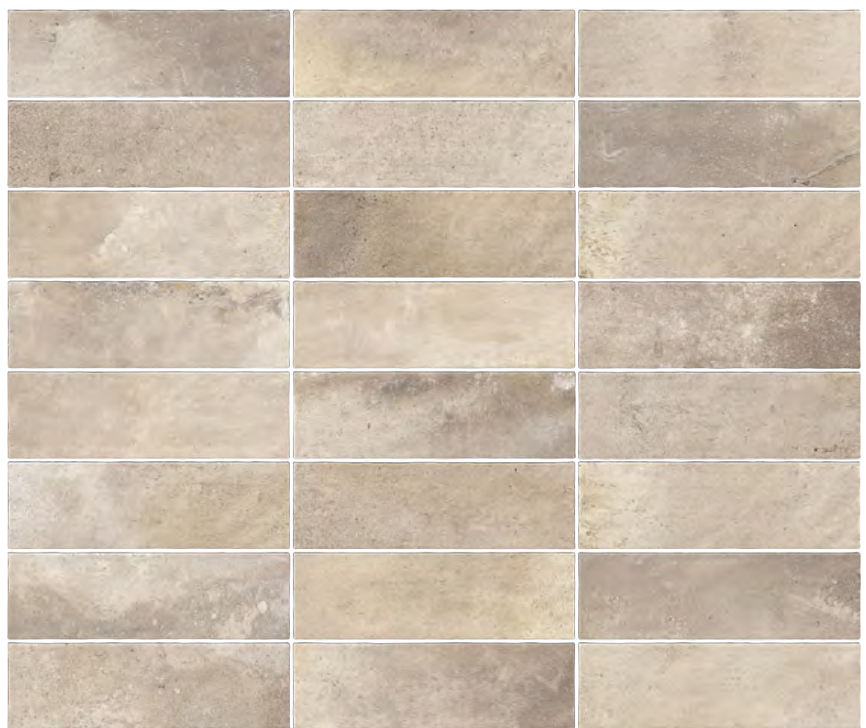
398x598mm



# ARIZONA SAND



**ARIZONA SAND/15**  
150×150mm/6"×6" / 16FACES / MATT



**ARIZONA SAND/75**  
75×230mm/3"×9" / 24FACES / MATT





# ARIZONA SAND FRENCH PATTERN

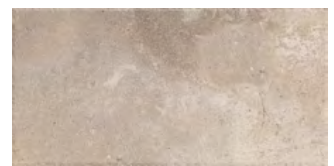


## FRENCH PATTERN SIZES

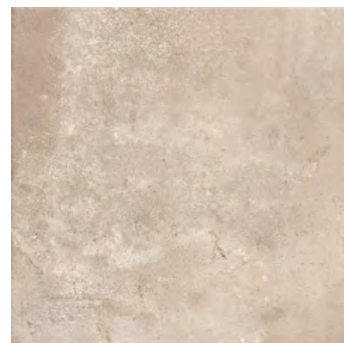
IN/OUT SURFACE



98x198mm



198x398mm



398x398mm










398x598mm



# Technical Specifications

Please note that this technical specification sheet is issued to you on an INDICATION ONLY basis as information is subject to shade/production variations, not necessarily to material you would be receiving. No responsibility will be held for the item not meeting this result. It is the responsibility of the end user to carry out appropriate testing for the tiles intended use.

	Properties	Test Method	Required Value	Value																																																
	Water absorption	<div>MS ISO 10545-3:2001</div>	<div><math>E_b \leq 0.5\%</math></div> <div>Individual maximum 0.6%</div>	<div>0.17%</div> <div>0.16%~0.19%</div>																																																
	Determination of dimensions	<table><tr><th colspan="2">Dimensions and surface quality</th></tr><tr><td><b>Length and width</b> The deviation, of the average size for each tile from the work size</td><td>MS ISO 10545-2:2002</td></tr><tr><td><b>Thickness</b> The deviation of the average thickness of each tile from the work size thickness</td><td>MS ISO 10545-2:2002</td></tr><tr><td><b>Straightness of sides</b> The maximum deviation from straightness related to the corresponding work sizes</td><td>MS ISO 10545-2:2002</td></tr><tr><td><b>Rectangularity</b> The maximum deviation from Rectangularity related to the corresponding work sizes</td><td>MS ISO 10545-2:2002</td></tr></table>	Dimensions and surface quality		<b>Length and width</b> The deviation, of the average size for each tile from the work size	MS ISO 10545-2:2002	<b>Thickness</b> The deviation of the average thickness of each tile from the work size thickness	MS ISO 10545-2:2002	<b>Straightness of sides</b> The maximum deviation from straightness related to the corresponding work sizes	MS ISO 10545-2:2002	<b>Rectangularity</b> The maximum deviation from Rectangularity related to the corresponding work sizes	MS ISO 10545-2:2002	<table><tr><td rowspan="2">N≥15cm</td><td>±0.6%</td><td>0~+0.01%</td></tr><tr><td>±2.0mm</td><td>0~+0.1mm</td></tr><tr><td rowspan="2">N≥15cm</td><td>±5%</td><td>+0.4%~+1.7%</td></tr><tr><td>±0.5mm</td><td>0 ~+0.2mm</td></tr><tr><td rowspan="2">N≥15cm</td><td>±0.5%</td><td>-0.01%~+0.01%</td></tr><tr><td>±1.5mm</td><td>-0.1mm~+0.1mm</td></tr><tr><td rowspan="2">N≥15cm</td><td>±0.5%</td><td>-0.06%~+0.08%</td></tr><tr><td>±2.0mm</td><td>-0.4mm~+0.5mm</td></tr></table>	N≥15cm	±0.6%	0~+0.01%	±2.0mm	0~+0.1mm	N≥15cm	±5%	+0.4%~+1.7%	±0.5mm	0 ~+0.2mm	N≥15cm	±0.5%	-0.01%~+0.01%	±1.5mm	-0.1mm~+0.1mm	N≥15cm	±0.5%	-0.06%~+0.08%	±2.0mm	-0.4mm~+0.5mm																			
Dimensions and surface quality																																																				
<b>Length and width</b> The deviation, of the average size for each tile from the work size	MS ISO 10545-2:2002																																																			
<b>Thickness</b> The deviation of the average thickness of each tile from the work size thickness	MS ISO 10545-2:2002																																																			
<b>Straightness of sides</b> The maximum deviation from straightness related to the corresponding work sizes	MS ISO 10545-2:2002																																																			
<b>Rectangularity</b> The maximum deviation from Rectangularity related to the corresponding work sizes	MS ISO 10545-2:2002																																																			
N≥15cm	±0.6%	0~+0.01%																																																		
	±2.0mm	0~+0.1mm																																																		
N≥15cm	±5%	+0.4%~+1.7%																																																		
	±0.5mm	0 ~+0.2mm																																																		
N≥15cm	±0.5%	-0.01%~+0.01%																																																		
	±1.5mm	-0.1mm~+0.1mm																																																		
N≥15cm	±0.5%	-0.06%~+0.08%																																																		
	±2.0mm	-0.4mm~+0.5mm																																																		
	Breakage strength	<div>MS ISO 10545-4:2003</div>	<div>≥1300</div>	<div>1899</div>																																																
	Modulus of rupture	<div>MS ISO 10545-4:2003</div>	<div>Minimum 35</div> <div>Individual minimum 32</div>	<div>39.3</div> <div>37.2~41.1</div>																																																
	Chemical resistance	<table><tr><th colspan="4">Resistance to chemicals</th></tr><tr><td colspan="4">Resistance to household chemicals and swimming pool salts</td></tr><tr><td>a) Household chemicals: Ammonium chloride, 100g/L</td><td>MS ISO 10545-13:2018</td><td>Minimum GB</td><td>A</td></tr><tr><td>b) Swimming pool salts: Sodium hypochlorite solution, 20mg/L</td><td>MS ISO 10545-13:2018</td><td>Minimum GB</td><td>A</td></tr><tr><td colspan="4">Resistance to low concentrations of acids and alkalis</td></tr><tr><td>a) Hydrochloric acid solution, 3% (v/v)</td><td>MS ISO 10545-13:2018</td><td>Manufacturer to state classification</td><td>LA</td></tr><tr><td>b) Citric acid solution, 100g/L</td><td>MS ISO 10545-13:2018</td><td>Manufacturer to state classification</td><td>LA</td></tr><tr><td>c) Potassium hydroxide, 30g/L</td><td>MS ISO 10545-13:2018</td><td>Manufacturer to state classification</td><td>LA</td></tr><tr><td colspan="4">Resistance to high concentrations of acids and alkalis</td></tr><tr><td>a) Hydrochloric acid solution, 18% (v/v)</td><td>MS ISO 10545-13:2018</td><td>Test method available</td><td>HA</td></tr><tr><td>b) Lactic acid, 5 % (v/v)</td><td>MS ISO 10545-13:2018</td><td>Test method available</td><td>HA</td></tr><tr><td>c) Potassium hydroxide, 100g/L</td><td>MS ISO 10545-13:2018</td><td>Test method available</td><td>HA</td></tr></table>			Resistance to chemicals				Resistance to household chemicals and swimming pool salts				a) Household chemicals: Ammonium chloride, 100g/L	MS ISO 10545-13:2018	Minimum GB	A	b) Swimming pool salts: Sodium hypochlorite solution, 20mg/L	MS ISO 10545-13:2018	Minimum GB	A	Resistance to low concentrations of acids and alkalis				a) Hydrochloric acid solution, 3% (v/v)	MS ISO 10545-13:2018	Manufacturer to state classification	LA	b) Citric acid solution, 100g/L	MS ISO 10545-13:2018	Manufacturer to state classification	LA	c) Potassium hydroxide, 30g/L	MS ISO 10545-13:2018	Manufacturer to state classification	LA	Resistance to high concentrations of acids and alkalis				a) Hydrochloric acid solution, 18% (v/v)	MS ISO 10545-13:2018	Test method available	HA	b) Lactic acid, 5 % (v/v)	MS ISO 10545-13:2018	Test method available	HA	c) Potassium hydroxide, 100g/L	MS ISO 10545-13:2018	Test method available	HA
Resistance to chemicals																																																				
Resistance to household chemicals and swimming pool salts																																																				
a) Household chemicals: Ammonium chloride, 100g/L	MS ISO 10545-13:2018	Minimum GB	A																																																	
b) Swimming pool salts: Sodium hypochlorite solution, 20mg/L	MS ISO 10545-13:2018	Minimum GB	A																																																	
Resistance to low concentrations of acids and alkalis																																																				
a) Hydrochloric acid solution, 3% (v/v)	MS ISO 10545-13:2018	Manufacturer to state classification	LA																																																	
b) Citric acid solution, 100g/L	MS ISO 10545-13:2018	Manufacturer to state classification	LA																																																	
c) Potassium hydroxide, 30g/L	MS ISO 10545-13:2018	Manufacturer to state classification	LA																																																	
Resistance to high concentrations of acids and alkalis																																																				
a) Hydrochloric acid solution, 18% (v/v)	MS ISO 10545-13:2018	Test method available	HA																																																	
b) Lactic acid, 5 % (v/v)	MS ISO 10545-13:2018	Test method available	HA																																																	
c) Potassium hydroxide, 100g/L	MS ISO 10545-13:2018	Test method available	HA																																																	
	Stain resistance	<table><tr><td>a) Green staining agent in light oil</td><td>MS ISO 10545-14:2018</td><td>Minimum Class 3</td><td>Class 5</td></tr><tr><td>b) Red staining agent in light oil</td><td>MS ISO 10545-14:2018</td><td>Minimum Class 3</td><td>Class 5</td></tr><tr><td>c) Iodine, 13g/L solution in alcohol</td><td>MS ISO 10545-14:2018</td><td>Minimum Class 3</td><td>Class 5</td></tr><tr><td>d) Olive oil</td><td>MS ISO 10545-14:2018</td><td>Minimum Class 3</td><td>Class 5</td></tr></table>			a) Green staining agent in light oil	MS ISO 10545-14:2018	Minimum Class 3	Class 5	b) Red staining agent in light oil	MS ISO 10545-14:2018	Minimum Class 3	Class 5	c) Iodine, 13g/L solution in alcohol	MS ISO 10545-14:2018	Minimum Class 3	Class 5	d) Olive oil	MS ISO 10545-14:2018	Minimum Class 3	Class 5																																
a) Green staining agent in light oil	MS ISO 10545-14:2018	Minimum Class 3	Class 5																																																	
b) Red staining agent in light oil	MS ISO 10545-14:2018	Minimum Class 3	Class 5																																																	
c) Iodine, 13g/L solution in alcohol	MS ISO 10545-14:2018	Minimum Class 3	Class 5																																																	
d) Olive oil	MS ISO 10545-14:2018	Minimum Class 3	Class 5																																																	
	Origin	MADE IN CHINA																																																		



## Packing Information

Tile description		Quantity per Box		
Size (cm)	Texture	Pieces	Sqm	Weight (KGS)
15x15	Matt	44	0.99	17.65
7.5x23	Matt	56	0.966	25.80
French Pattern 2x198/198 3x198/398 1x398/398 1x398/598	In/Out Surface	7	0.72	14.00